

*East*  

---

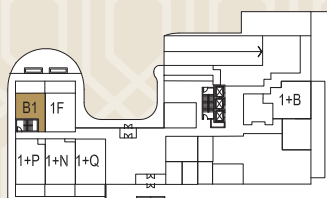
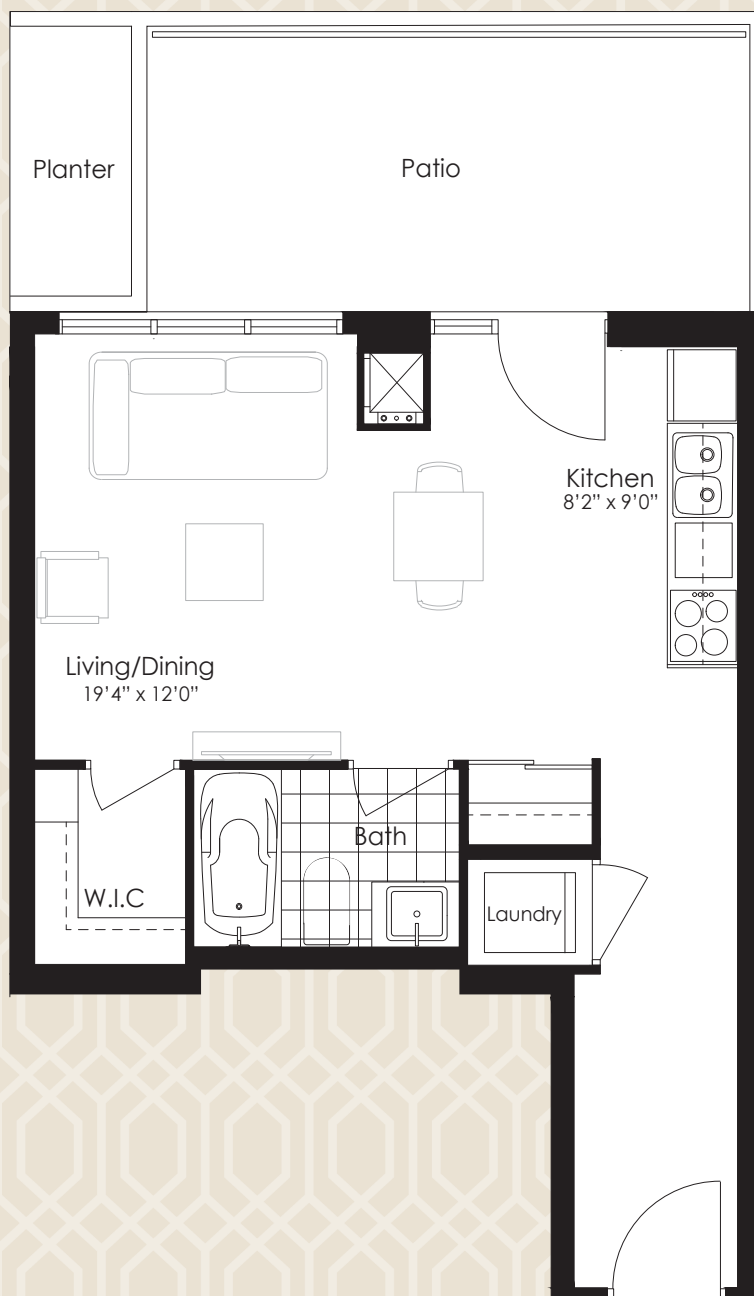
*3220*  
*CONDOS*

*the* BACHELOR  
SUITES



# Suite B1 | 456 SQ. FT.

**Bachelor** + Patio 130 sq.ft. (Ground Floor only)



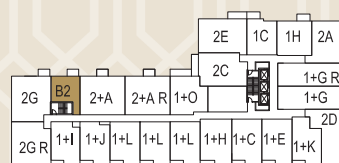
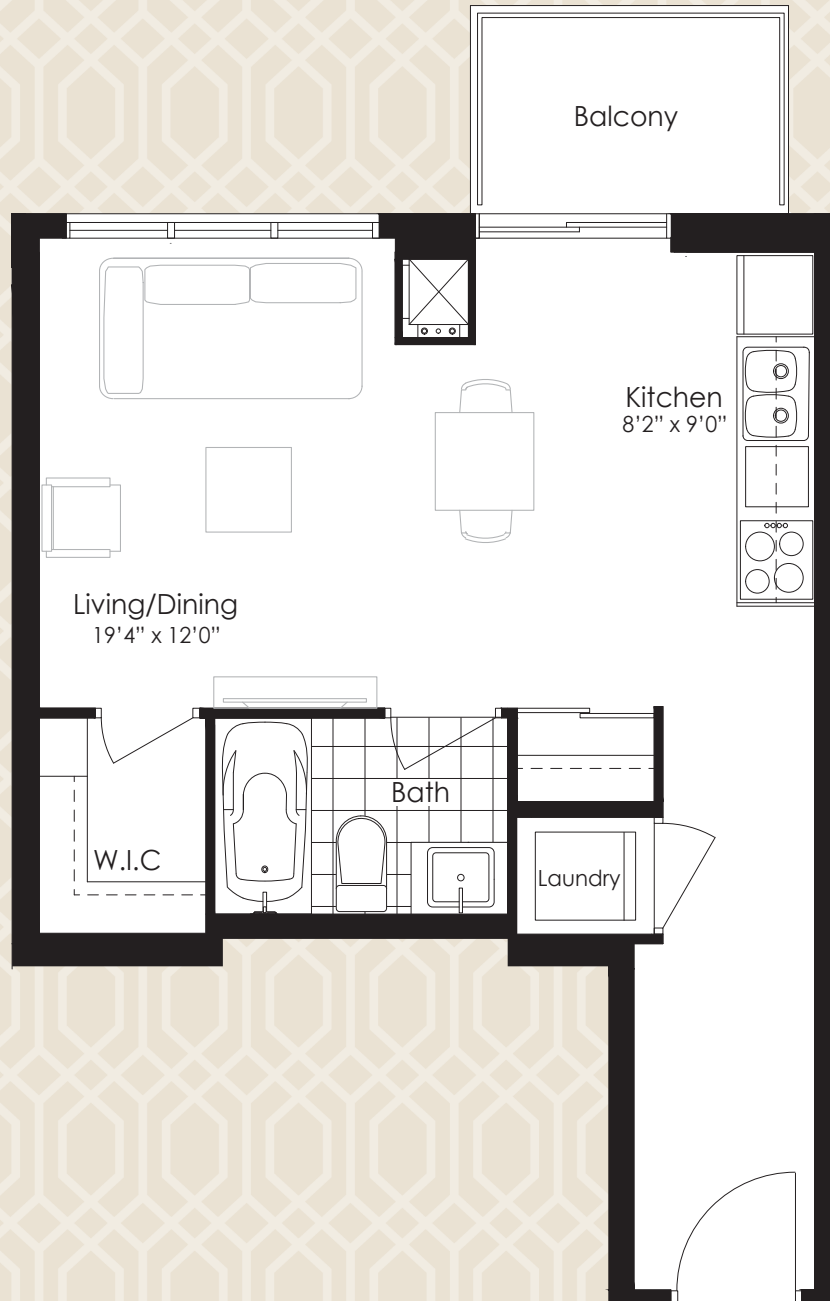
GROUND FLOOR

**QUADCAM**  
DEVELOPMENT GROUP INC.

This plan is not to scale and is subject to architectural review and revision. The Purchaser acknowledges that the actual unit purchased may be a reversed layout to the plan shown. All materials, specifications, details and dimensions, if any, are approximate and subject to change without notice in order to comply with building site conditions and municipal, structural, Vendor and/or architectural requirements. Actual living areas may vary from floor area stated. Floor area has been measured and may vary in accordance with bulletin #22 published by the Taron Warranty Corporation. Tile pattern may vary. Bulkheads are not shown on this plan and may be located in areas of the unit as required to provide venting and mechanical systems. Balconies, terraces, and patios, if any, are exclusive use common elements shown for display purposes only and location and size are subject to change without notice. Window location, size, and type may vary without notice. The length, width, material, and directional position of flooring or terrace covering are for illustration purposes only and may vary without notice. E. & O.E.

# 456 SQ. FT. | Suite B2

**Bachelor + Balcony** 43 sq.ft. (2nd to 4th Floor only)



2ND-4TH FLOOR



This plan is not to scale and is subject to architectural review and revision. The Purchaser acknowledges that the actual unit purchased may be a reversed layout to the plan shown. All materials, specifications, details and dimensions, if any, are approximate and subject to change without notice in order to comply with building site conditions and municipal, structural, Vendor and/or architectural requirements. Actual living areas may vary from floor area stated. Floor area has been measured and may vary in accordance with bulletin #22 published by the Tarion Warranty Corporation. Tile pattern may vary. Bulkheads are not shown on this plan and may be located in areas of the unit as required to provide venting and mechanical systems. Balconies, terraces, and patios, if any, are exclusive use common elements shown for display purposes only and location and size are subject to change without notice. Window location, size, and type may vary without notice. The length, width, material, and directional position of flooring or terrace covering are for illustration purposed only and may vary without notice. E. & O.E.

*QEast*  
**3220**  
CONDOS

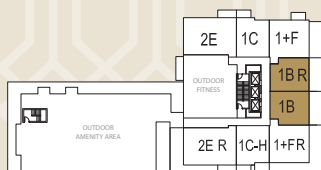
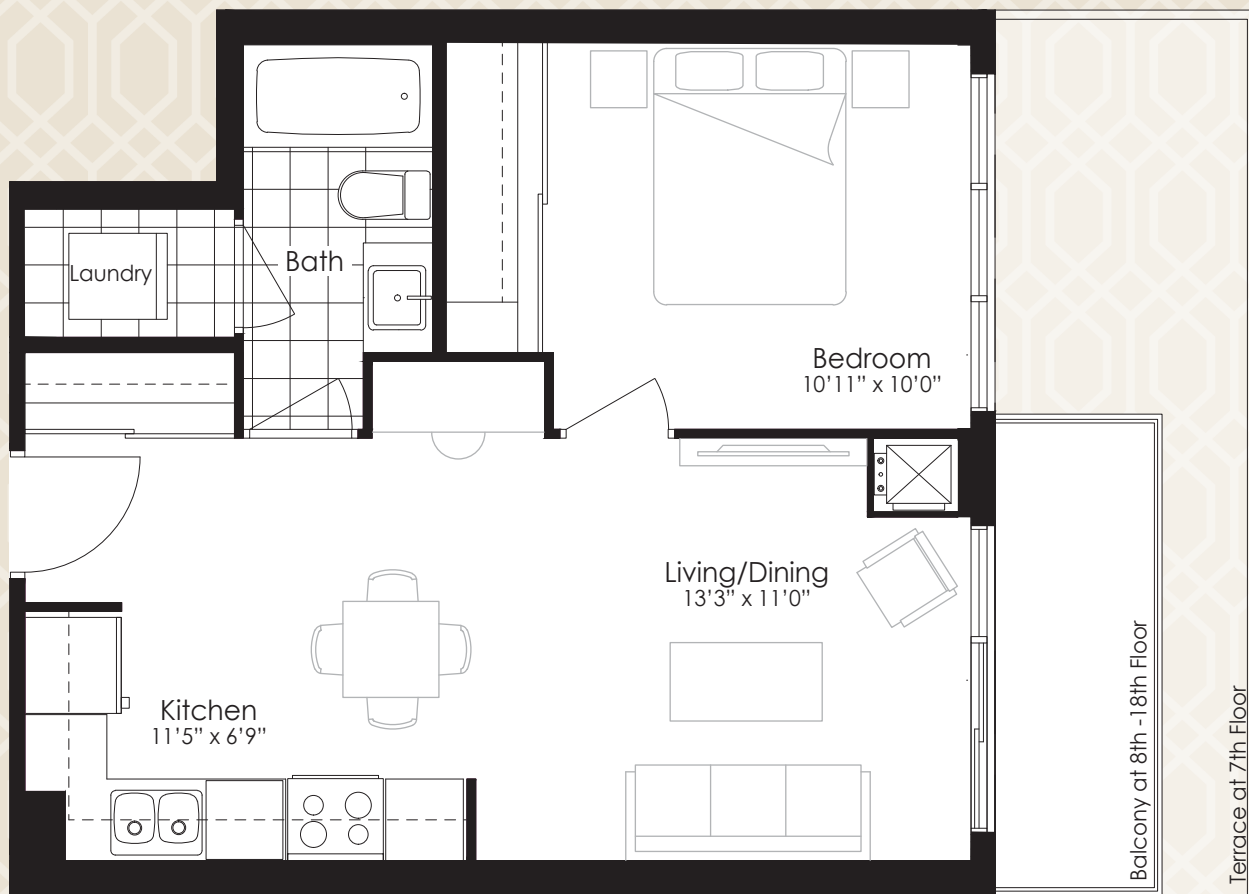


*the* ONE  
BEDROOM

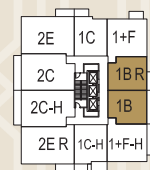


# 552 SQ. FT. | Suite 1B

**One Bedroom** + Terrace 215 sq.ft.<sub>(7th Floor only)</sub> /+ Balcony 111 sq.ft. /61 sq.ft.<sub>(8th to 18th Floor)</sub>



7TH FLOOR



8TH - 16TH FLOOR



17TH - 18TH FLOOR

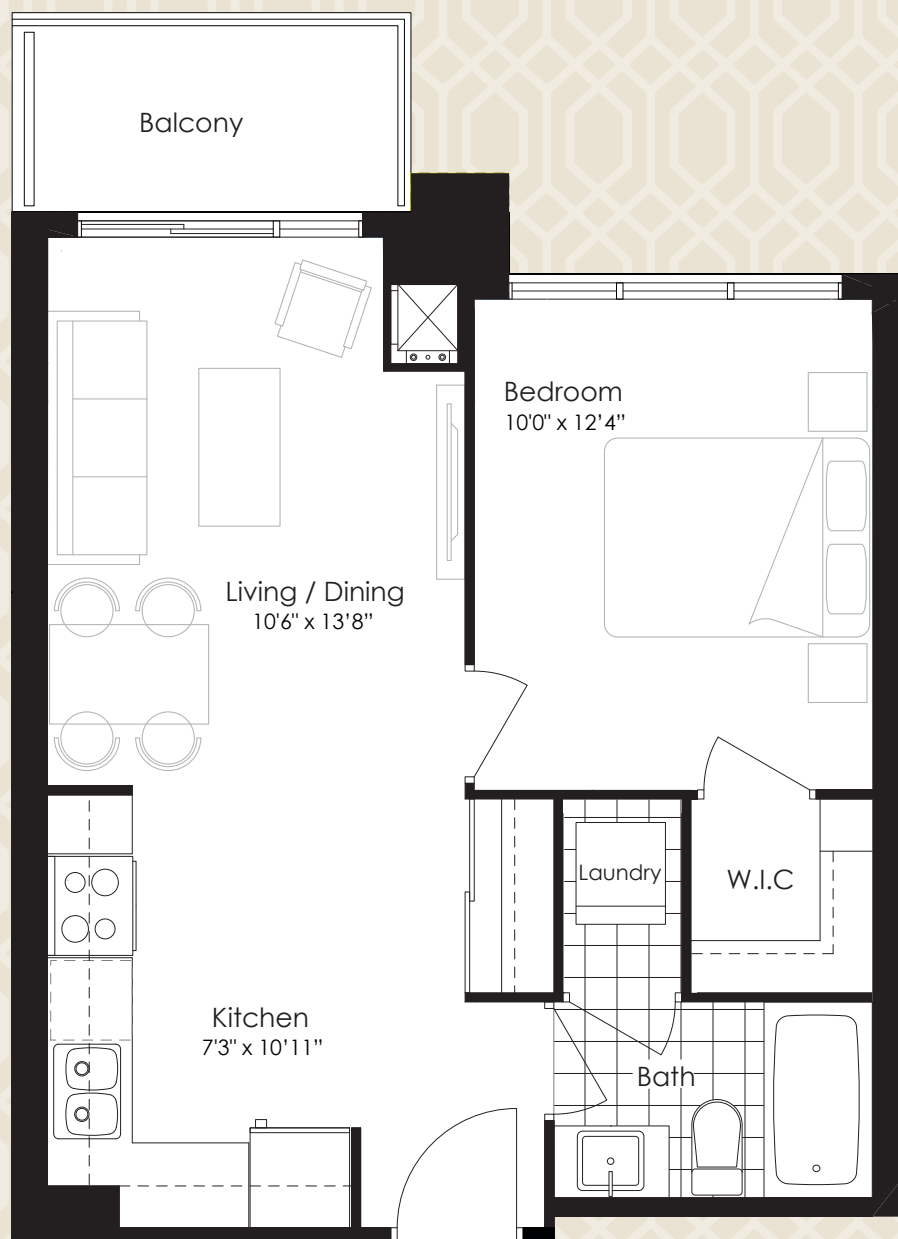


This plan is not to scale and is subject to architectural review and revision. The Purchaser acknowledges that the actual unit purchased may be a reversed layout to the plan shown. All materials, specifications, details and dimensions, if any, are approximate and subject to change without notice in order to comply with building site conditions and municipal, structural, Vendor and/or architectural requirements. Actual living areas may vary from floor area stated. Floor area has been measured and may vary in accordance with bulletin #22 published by the Tarion Warranty Corporation. Tile pattern may vary. Bulkheads are not shown on this plan and may be located in areas of the unit as required to provide venting and mechanical systems. Balconies, terraces, and patios, if any, are exclusive use common elements shown for display purposes only and location and size are subject to change without notice. Window location, size, and type may vary without notice. The length, width, material, and directional position of flooring or terrace covering are for illustration purposes only and may vary without notice. E. & O.E.

*East*  
**3220**  
CONDOS

# Suite 1C | 555 SQ. FT.

**One Bedroom + Balcony** 47 sq.ft. (2nd to 18th Floor)



2ND-4TH FLOOR



5TH FLOOR



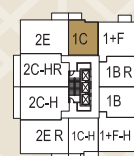
6TH FLOOR



7TH FLOOR



8TH - 16TH FLOOR

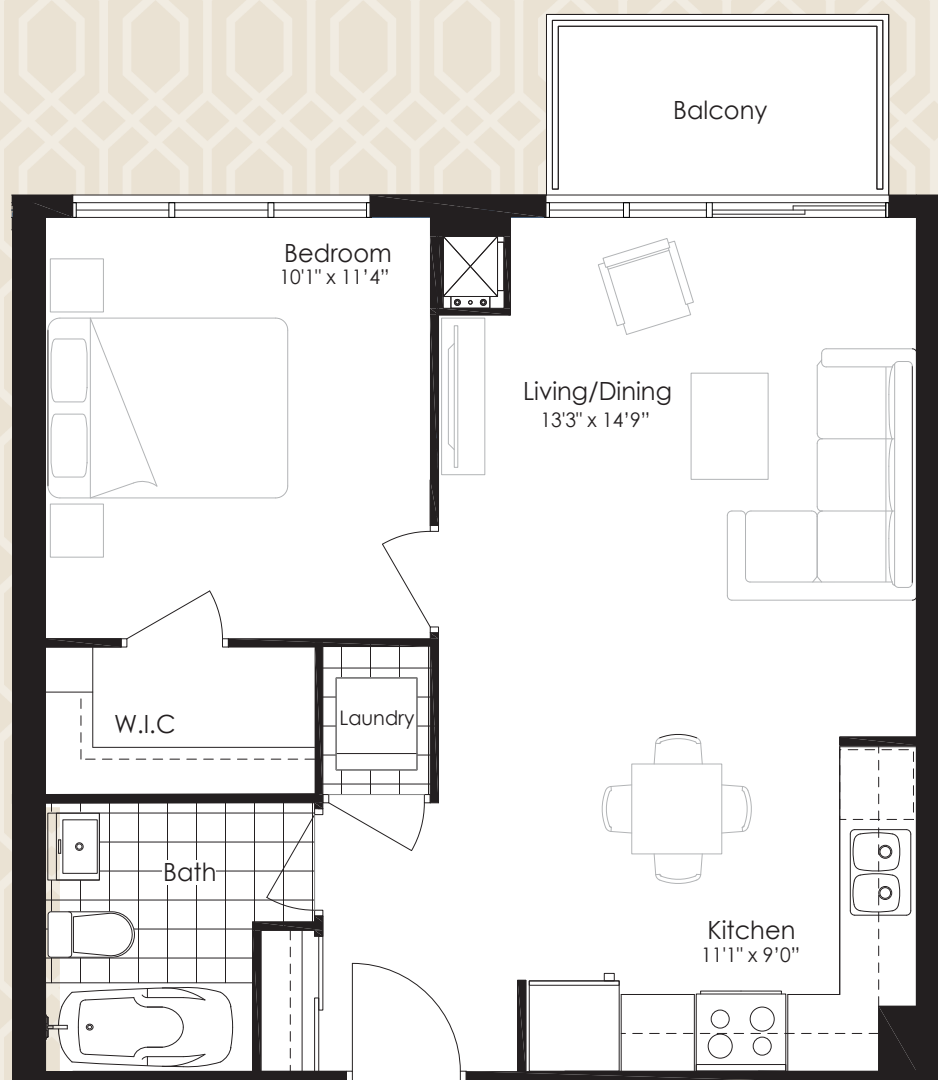


17TH - 18TH FLOOR



# Suite 1H | 640 SQ. FT.

**One Bedroom + Balcony** 47 sq.ft. (2nd to 6th Floor)



2ND-4TH FLOOR



5TH FLOOR



6TH FLOOR

**QUADCAM**  
DEVELOPMENT GROUP INC.

This plan is not to scale and is subject to architectural review and revision. The Purchaser acknowledges that the actual unit purchased may be a reversed layout to the plan shown. All materials, specifications, details and dimensions, if any, are approximate and subject to change without notice in order to comply with building site conditions and municipal, structural, Vendor and/or architectural requirements. Actual living areas may vary from floor area stated. Floor area has been measured and may vary in accordance with bulletin #22 published by the Tarion Warranty Corporation. Tile pattern may vary. Bulkheads are not shown on this plan and may be located in areas of the unit as required to provide venting and mechanical systems. Balconies, terraces, and patios, if any, are exclusive use common elements shown for display purposes only and location and size are subject to change without notice. Window location, size, and type may vary without notice. The length, width, material, and directional position of flooring or terrace covering are for illustration purposed only and may vary without notice. E. & O.E.



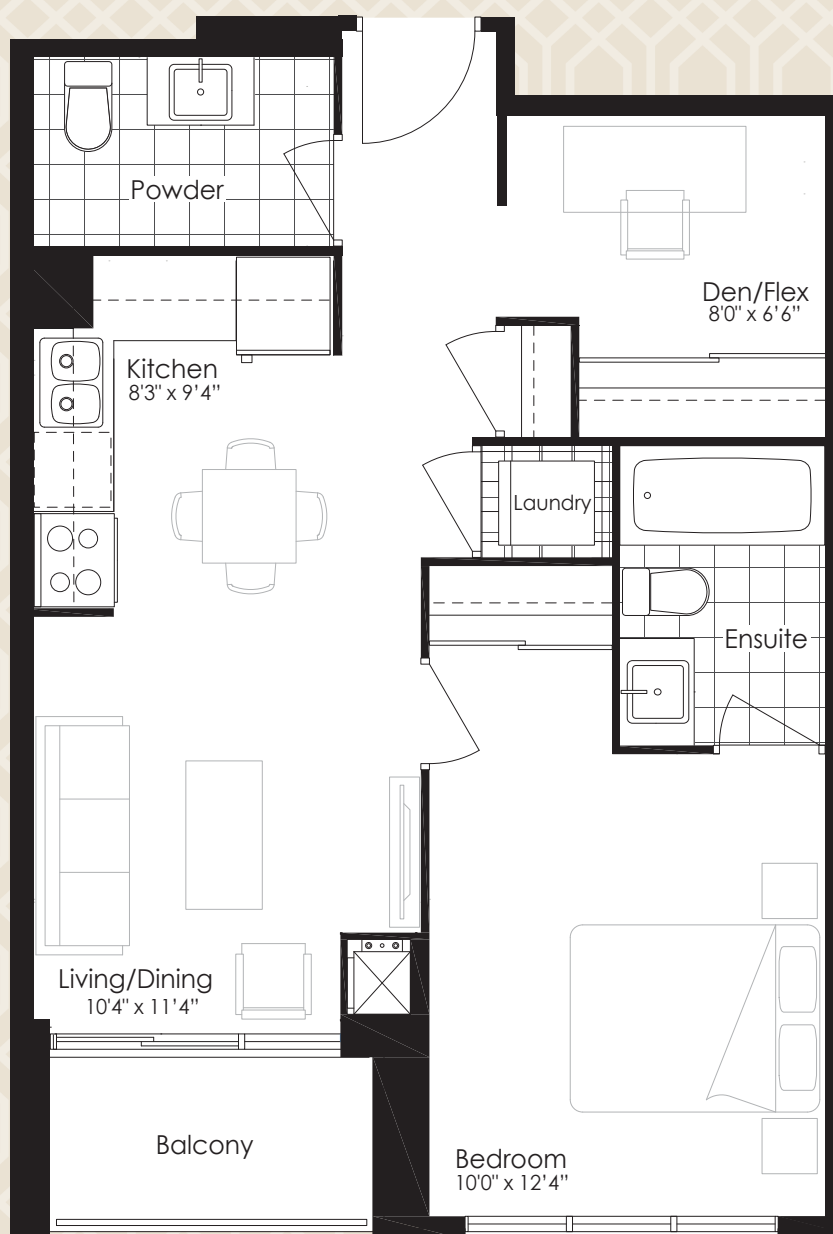
*the* ONE  
BEDROOM  
+ DEN





# Suite 1+J | 662 SQ. FT.

One Bedroom + Den + Balcony 43 sq.ft. (2nd to 4th Floor)

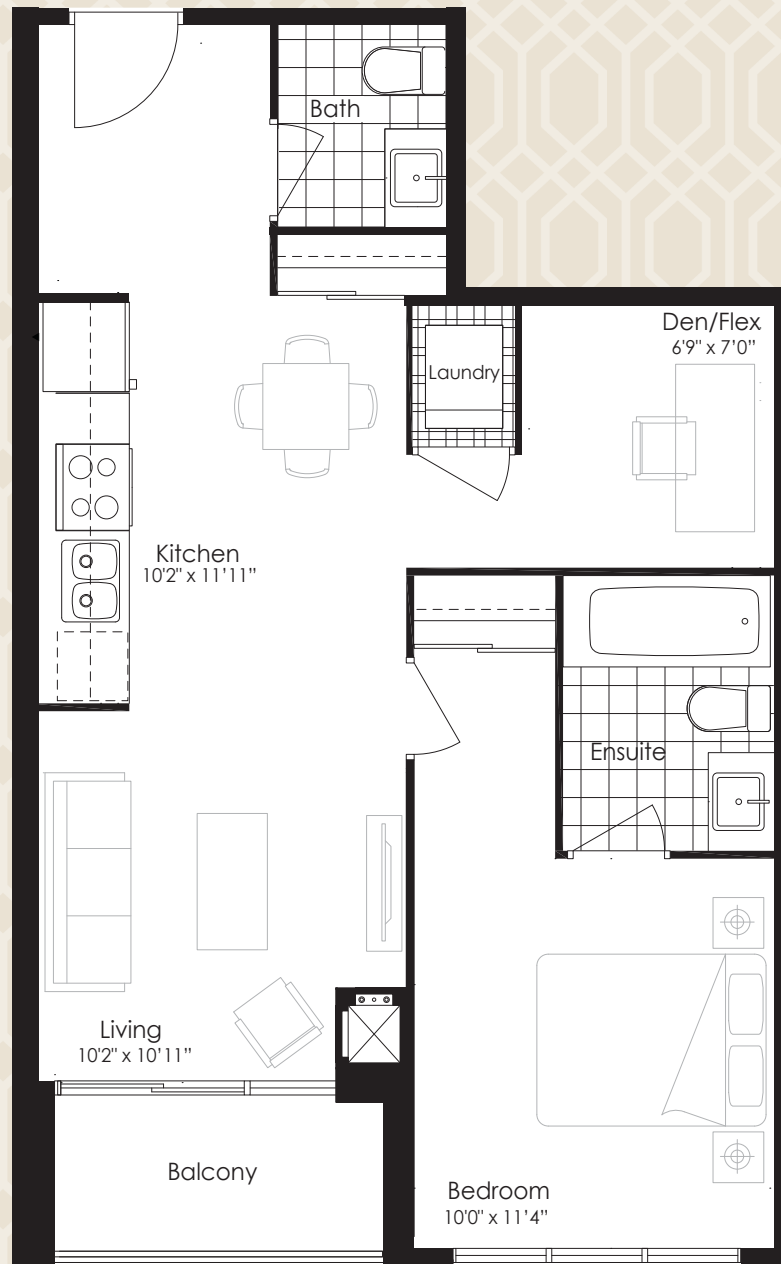


**QUADCAM**  
DEVELOPMENT GROUP INC.

This plan is not to scale and is subject to architectural review and revision. The Purchaser acknowledges that the actual unit purchased may be a reversed layout to the plan shown. All materials, specifications, details and dimensions, if any, are approximate and subject to change without notice in order to comply with building site conditions and municipal, structural, Vendor and/or architectural requirements. Actual living areas may vary from floor area stated. Floor area has been measured and may vary in accordance with bulletin #22 published by the Tarion Warranty Corporation. Tile pattern may vary. Bulkheads are not shown on this plan and may be located in areas of the unit as required to provide venting and mechanical systems. Balconies, terraces, and patios, if any, are exclusive use common elements shown for display purposes only and location and size are subject to change without notice. Window location, size, and type may vary without notice. The length, width, material, and directional position of flooring or terrace covering are for illustration purposes only and may vary without notice. E. & O.E.

# 663 SQ. FT. | Suite 1+K

One Bedroom + Den + Balcony 43 sq.ft. (2nd to 4th Floor)



2ND-4TH FLOOR

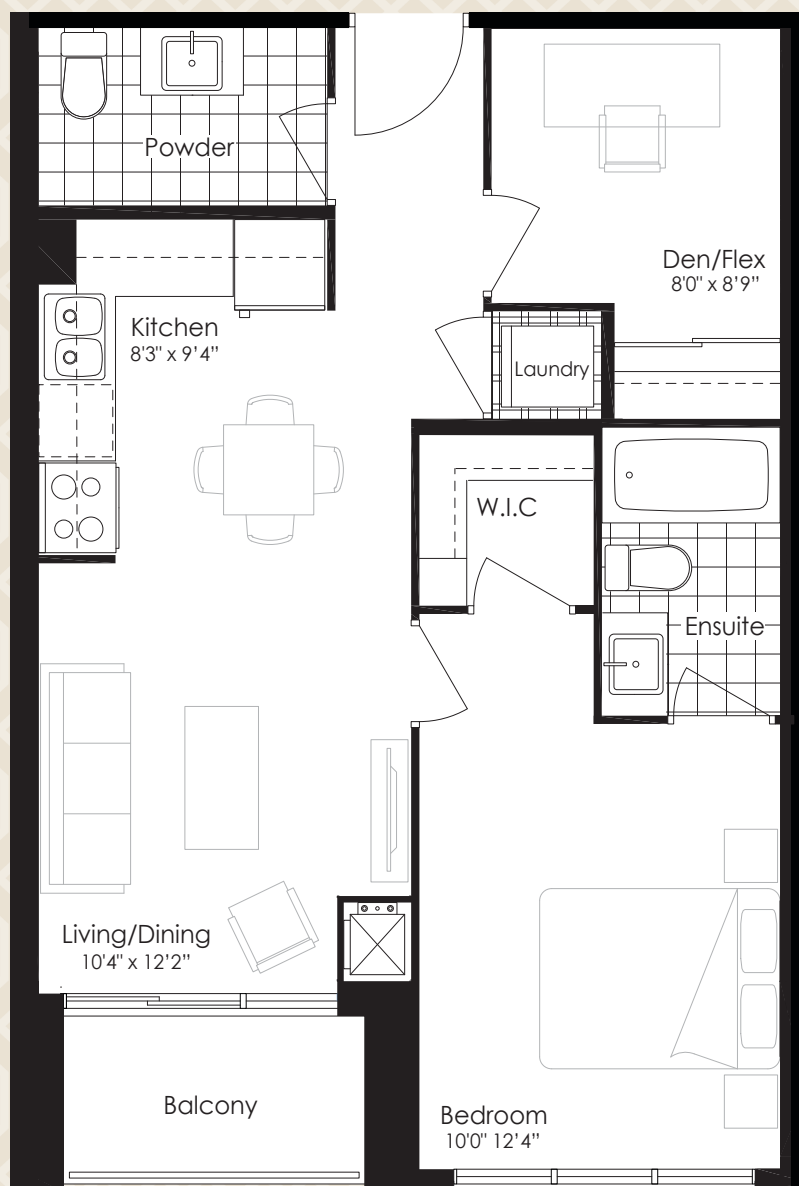


This plan is not to scale and is subject to architectural review and revision. The Purchaser acknowledges that the actual unit purchased may be a reversed layout to the plan shown. All materials, specifications, details and dimensions, if any, are approximate and subject to change without notice in order to comply with building site conditions and municipal, structural, Vendor and/or architectural requirements. Actual living areas may vary from floor area stated. Floor area has been measured and may vary in accordance with bulletin #22 published by the Tarion Warranty Corporation. Tile pattern may vary. Bulkheads are not shown on this plan and may be located in areas of the unit as required to provide venting and mechanical systems. Balconies, terraces, and patios, if any, are exclusive use common elements shown for display purposes only and location and size are subject to change without notice. Window location, size, and type may vary without notice. The length, width, material, and directional position of flooring or terrace covering are for illustration purposed only and may vary without notice. E. & O.E.

*East*  
**3220**  
CONDOS

# Suite 1+L | 677 SQ. FT.

**One Bedroom + Den + Balcony** 43 sq.ft. (2nd to 4th Floor)



2ND-4TH FLOOR

**QUADCAM**  
DEVELOPMENT GROUP INC.

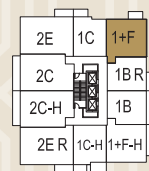
This plan is not to scale and is subject to architectural review and revision. The Purchaser acknowledges that the actual unit purchased may be a reversed layout to the plan shown. All materials, specifications, details and dimensions, if any, are approximate and subject to change without notice in order to comply with building site conditions and municipal, structural, Vendor and/or architectural requirements. Actual living areas may vary from floor area stated. Floor area has been measured and may vary in accordance with bulletin #22 published by the Tarion Warranty Corporation. Tile pattern may vary. Bulkheads are not shown on this plan and may be located in areas of the unit as required to provide venting and mechanical systems. Balconies, terraces, and patios, if any, are exclusive use common elements shown for display purposes only and location and size are subject to change without notice. Window location, size, and type may vary without notice. The length, width, material, and directional position of flooring or terrace covering are for illustration purposes only and may vary without notice. E. & O.E.

# 688 SQ. FT. | Suite 1+F

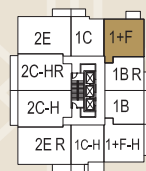
**One Bedroom + Den** + Terrace 234 sq.ft.<sub>(7th Floor only)</sub> / 430 sq.ft.<sub>(7th Floor only)</sub> /+ Balcony 47 sq.ft.<sub>(7th to 18th Floor)</sub>



7TH FLOOR



8TH - 16TH FLOOR



17TH - 18TH FLOOR

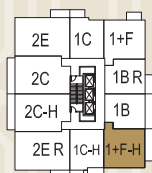


This plan is not to scale and is subject to architectural review and revision. The Purchaser acknowledges that the actual unit purchased may be a reversed layout to the plan shown. All materials, specifications, details and dimensions, if any, are approximate and subject to change without notice in order to comply with building site conditions and municipal, structural, Vendor and/or architectural requirements. Actual living areas may vary from floor area stated. Floor area has been measured and may vary in accordance with bulletin #22 published by the Tarion Warranty Corporation. Tile pattern may vary. Bulkheads are not shown on this plan and may be located in areas of the unit as required to provide venting and mechanical systems. Balconies, terraces, and patios, if any, are exclusive use common elements shown for display purposes only and location and size are subject to change without notice. Window location, size, and type may vary without notice. The length, width, material, and directional position of flooring or terrace covering are for illustration purposes only and may vary without notice. E. & O.E.

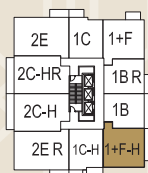
*East*  
**3220**  
CONDOS

# Suite 1+F-H | 688 SQ. FT.

One Bedroom + Den + Balcony 103 sq.ft. (8th to 18th Floor)



8TH - 16TH FLOOR



17TH - 18TH FLOOR

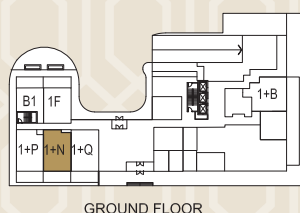
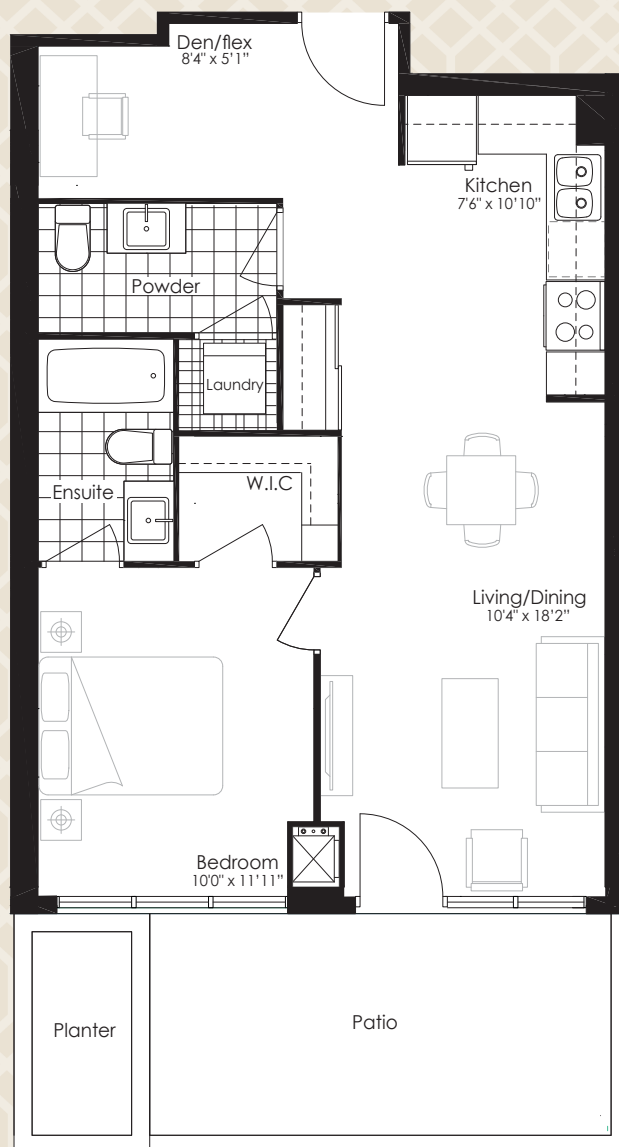
**QUADCAM**  
DEVELOPMENT GROUP INC.

This plan is not to scale and is subject to architectural review and revision. The Purchaser acknowledges that the actual unit purchased may be a reversed layout to the plan shown. All materials, specifications, details and dimensions, if any, are approximate and subject to change without notice in order to comply with building site conditions and municipal, structural, Vendor and/or architectural requirements. Actual living areas may vary from floor area stated. Floor area has been measured and may vary in accordance with bulletin #22 published by the Tarion Warranty Corporation. Tile pattern may vary. Bulkheads are not shown on this plan and may be located in areas of the unit as required to provide venting and mechanical systems. Balconies, terraces, and patios, if any, are exclusive use common elements shown for display purposes only and location and size are subject to change without notice. Window location, size, and type may vary without notice. The length, width, material, and directional position of flooring or terrace covering are for illustration purposes only and may vary without notice. E. & O.E.



# Suite 1+N | 697 SQ. FT.

**One Bedroom + Den + Patio** 130 sq.ft. (Ground Floor only)

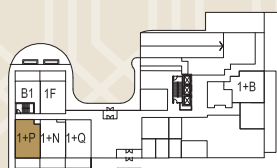
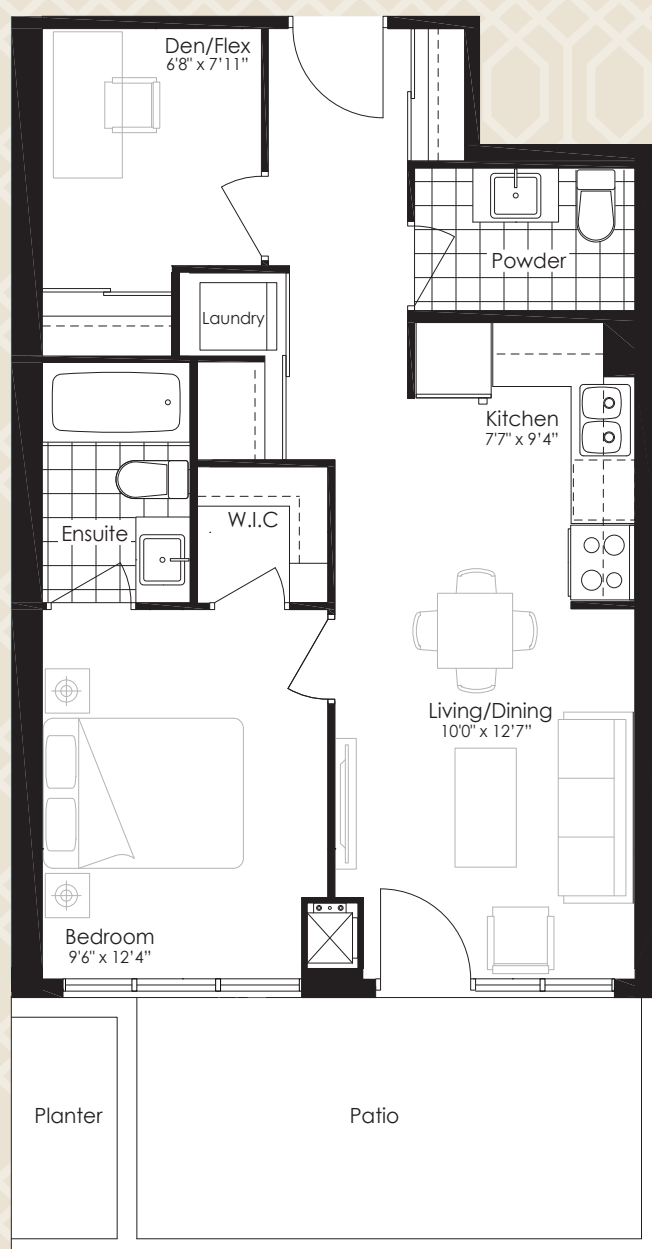


**QUADCAM**  
DEVELOPMENT GROUP INC.

This plan is not to scale and is subject to architectural review and revision. The Purchaser acknowledges that the actual unit purchased may be a reversed layout to the plan shown. All materials, specifications, details and dimensions, if any, are approximate and subject to change without notice in order to comply with building site conditions and municipal, structural, Vendor and/or architectural requirements. Actual living areas may vary from floor area stated. Floor area has been measured and may vary in accordance with bulletin #22 published by the Tarion Warranty Corporation. Tile pattern may vary. Bulkheads are not shown on this plan and may be located in areas of the unit as required to provide venting and mechanical systems. Balconies, terraces, and patios, if any, are exclusive use common elements shown for display purposes only and location and size are subject to change without notice. Window location, size, and type may vary without notice. The length, width, material, and directional position of flooring or terrace covering are for illustration purposes only and may vary without notice. E. & O.E.

# Suite 1+P | 710 SQ. FT.

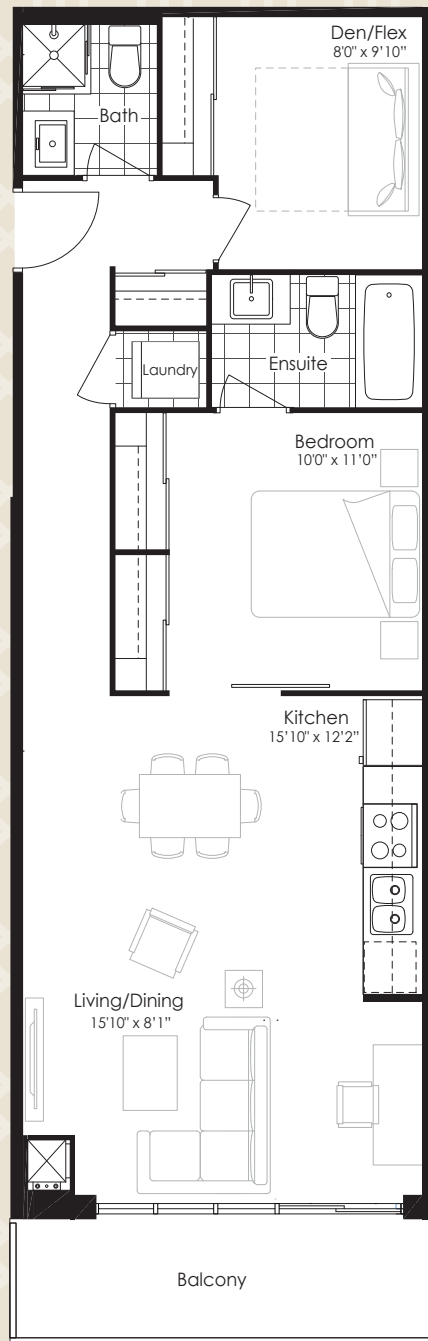
**One Bedroom + Den + Patio** 130 sq.ft. (Ground Floor only)



GROUND FLOOR

# 821 SQ. FT. | Suite 1+G

One Bedroom + Den + Balcony 43 sq.ft. (2nd to 6th Floor)



2ND-4TH FLOOR



5TH FLOOR



6TH FLOOR



This plan is not to scale and is subject to architectural review and revision. The Purchaser acknowledges that the actual unit purchased may be a reversed layout to the plan shown. All materials, specifications, details and dimensions, if any, are approximate and subject to change without notice in order to comply with building site conditions and municipal, structural, Vendor and/or architectural requirements. Actual living areas may vary from floor area stated. Floor area has been measured and may vary in accordance with bulletin #22 published by the Tarion Warranty Corporation. Tile pattern may vary. Bulkheads are not shown on this plan and may be located in areas of the unit as required to provide venting and mechanical systems. Balconies, terraces, and patios, if any, are exclusive use common elements shown for display purposes only and location and size are subject to change without notice. Window location, size, and type may vary without notice. The length, width, material, and directional position of flooring or terrace covering are for illustration purposed only and may y without notice. E. & O.E.

*East*  
**3220**  
CONDOS

*the* TWO  
BEDROOM



# Suite 2C | 829 SQ. FT.

**Two Bedroom + Balcony** 78 sq.ft. (2nd to 6th/ 8th to 16th Floor)



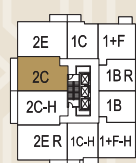
2ND-4TH FLOOR



5TH FLOOR



6TH FLOOR



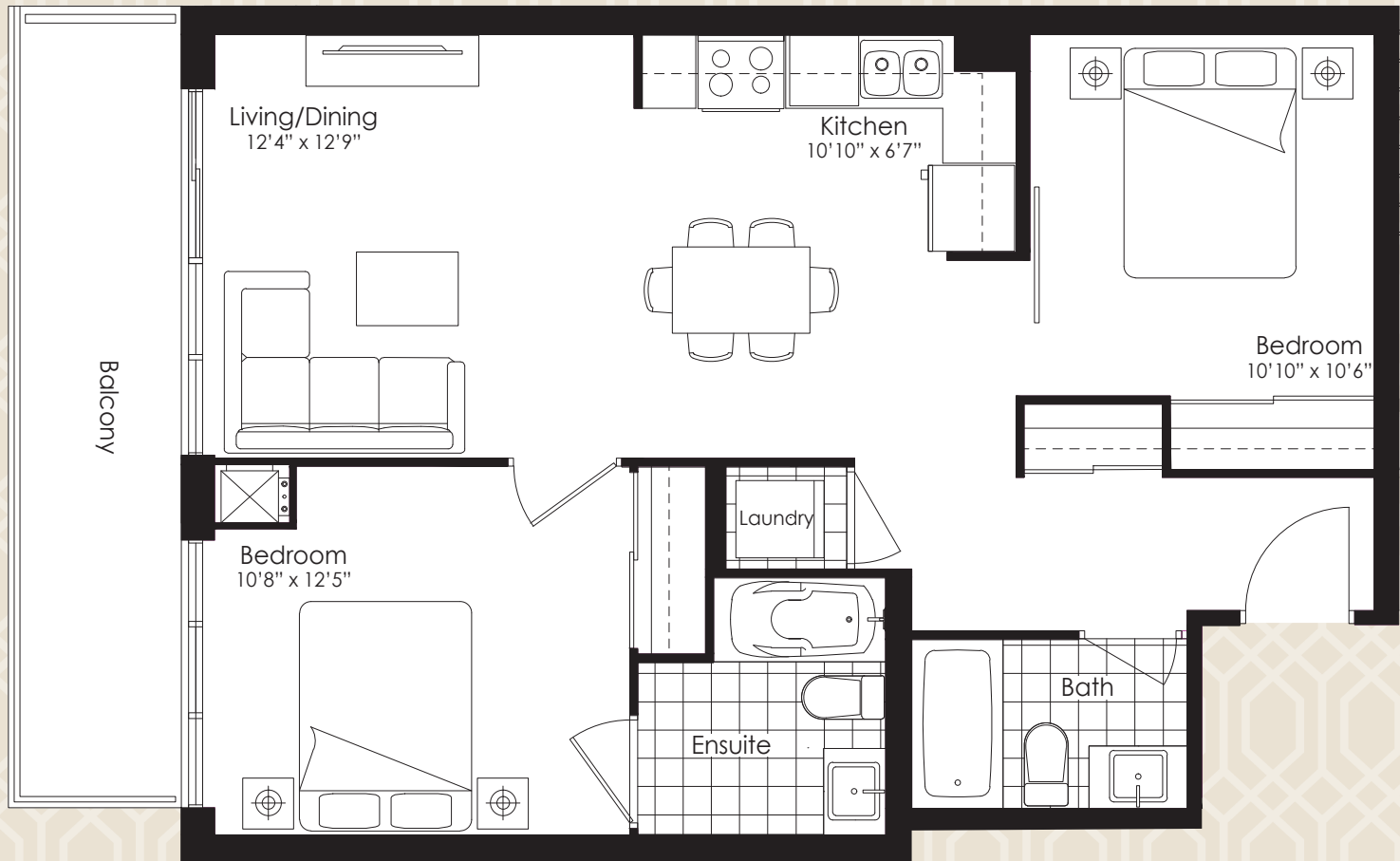
8TH - 16TH FLOOR



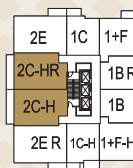


# 829 SQ. FT. | Suite 2C-H

Two Bedroom + Balcony 115 sq.ft. (8th to 18th Floor)



8TH - 16TH FLOOR



17TH - 18TH FLOOR

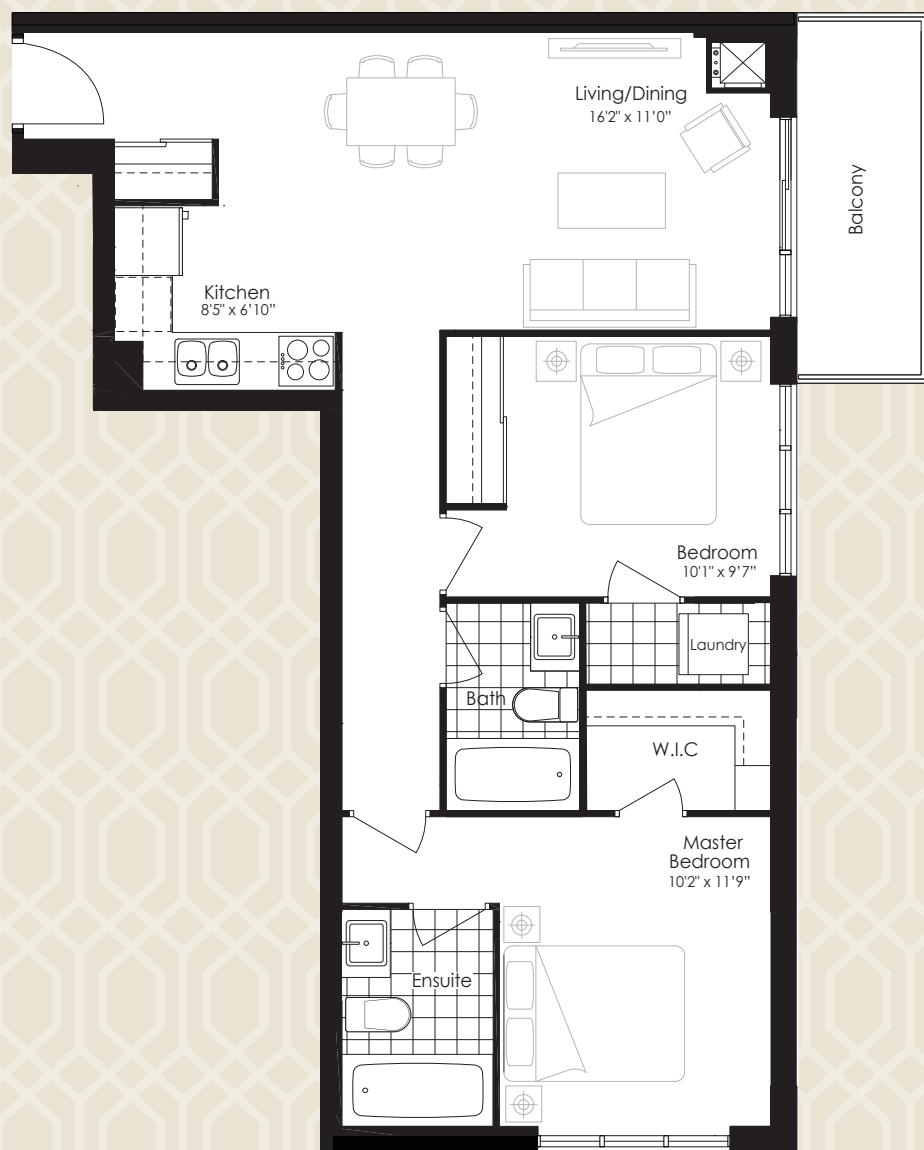


This plan is not to scale and is subject to architectural review and revision. The Purchaser acknowledges that the actual unit purchased may be a reversed layout to the plan shown. All materials, specifications, details and dimensions, if any, are approximate and subject to change without notice in order to comply with building site conditions and municipal, structural, Vendor and/or architectural requirements. Actual living areas may vary from floor area stated. Floor area has been measured and may vary in accordance with bulletin #22 published by the Tarion Warranty Corporation. Tile pattern may vary. Bulkheads are not shown on this plan and may be located in areas of the unit as required to provide venting and mechanical systems. Balconies, terraces, and patios, if any, are exclusive use common elements shown for display purposes only and location and size are subject to change without notice. Window location, size, and type may vary without notice. The length, width, material, and directional position of flooring or terrace covering are for illustration purposes only and may vary without notice. E. & O.E.

*East*  
**3220**  
CONDOS

# Suite 2D | 863 SQ. FT.

**Two Bedroom + Balcony** 65 sq.ft. (2nd to 4th Floor)



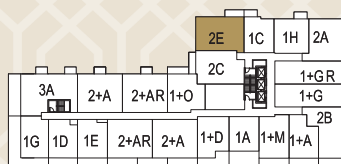
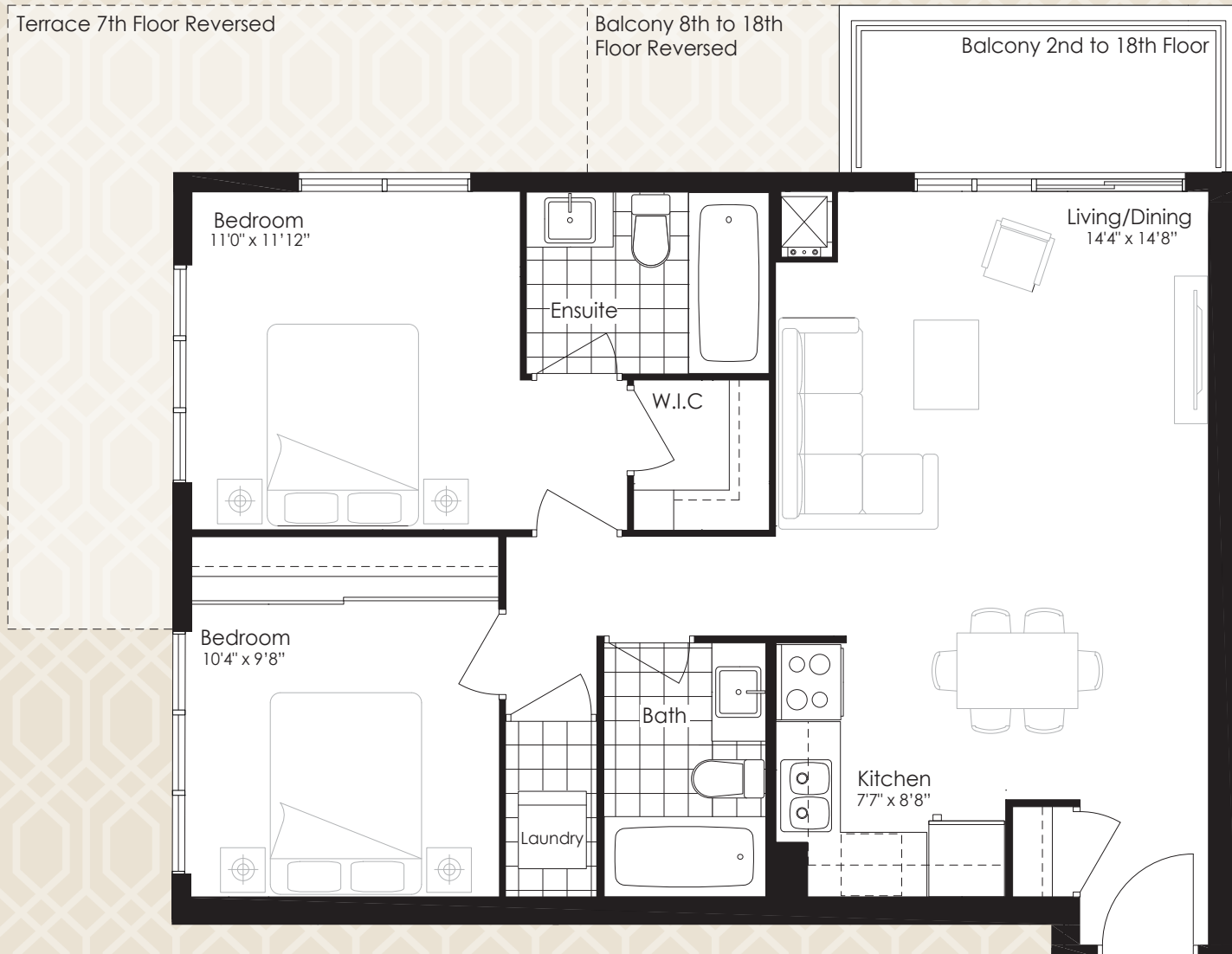
2ND-4TH FLOOR

**QUADCAM**  
DEVELOPMENT GROUP INC.

This plan is not to scale and is subject to architectural review and revision. The Purchaser acknowledges that the actual unit purchased may be a reversed layout to the plan shown. All materials, specifications, details and dimensions, if any, are approximate and subject to change without notice in order to comply with building site conditions and municipal, structural, Vendor and/or architectural requirements. Actual living areas may vary from floor area stated. Floor area has been measured and may vary in accordance with bulletin #22 published by the Tarion Warranty Corporation. Tile pattern may vary. Bulkheads are not shown on this plan and may be located in areas of the unit as required to provide venting and mechanical systems. Balconies, terraces, and patios, if any, are exclusive use common elements shown for display purposes only and location and size are subject to change without notice. Window location, size, and type may vary without notice. The length, width, material, and directional position of flooring or terrace covering are for illustration purposed only and may vary without notice. E. & O.E.

# 872 SQ. FT. | Suite 2E

**Two Bedroom + Terrace** 280 sq.ft. (7th Floor only) /+ **Balcony** 61 sq.ft. (2nd to 18th Floor) /104 sq.ft. (8th to 18th Floor)



This plan is not to scale and is subject to architectural review and revision. The Purchaser acknowledges that the actual unit purchased may be a reversed layout to the plan shown. All materials, specifications, details and dimensions, if any, are approximate and subject to change without notice in order to comply with building site conditions and municipal, structural, Vendor and/or architectural requirements. Actual living areas may vary from floor area stated. Floor area has been measured and may vary in accordance with bulletin #22 published by the Tarion Warranty Corporation. Tile pattern may vary. Bulkheads are not shown on this plan and may be located in areas of the unit as required to provide venting and mechanical systems. Balconies, terraces, and patios, if any, are exclusive use common elements shown for display purposes only and location and size are subject to change without notice. Window location, size, and type may vary without notice. The length, width, material, and directional position of flooring or terrace covering are for illustration purposes only and may vary without notice. E. & O.E.

*East*  
**3220**  
CONDOS

## Two Bedroom + Balcony 43 sq.ft. (2nd to 4th Floor)



2ND-4TH FLOOR



This plan is not to scale and is subject to architectural review and revision. The Purchaser acknowledges that the actual unit purchased may be a reversed layout to the plan shown. All materials, specifications, details and dimensions, if any, are approximate and subject to change without notice in order to comply with building site conditions and municipal, structural, Vendor and/or architectural requirements. Actual living areas may vary from floor area stated. Floor area has been measured and may vary in accordance with bulletin #22 published by the Tarion Warranty Corporation. Tile pattern may vary. Bulkheads are not shown on this plan and may be located in areas of the unit as required to provide venting and mechanical systems. Balconies, terraces, and patios, if any, are exclusive use common elements shown for display purposes only and location and size are subject to change without notice. Window location, size, and type may vary without notice. The length, width, material, and directional position of flooring or terrace covering are for illustration purposes only and may vary without notice. E. & O.E.

*East*  
**3220**  
CONDOS

*the* TWO  
BEDROOM  
+ DEN

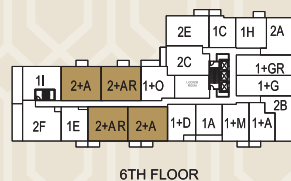
*the* THREE  
BEDROOM





# Suite 2+A | 909 SQ. FT.

**Two Bedroom + Den + Terrace** 124 sq.ft.<sub>(5th Floor only)</sub> /+ **Balcony** 43 sq.ft.<sub>(2nd to 6th Floor)</sub>



**QUADCAM**  
DEVELOPMENT GROUP INC.

This plan is not to scale and is subject to architectural review and revision. The Purchaser acknowledges that the actual unit purchased may be a reversed layout to the plan shown. All materials, specifications, details and dimensions, if any, are approximate and subject to change without notice in order to comply with building site conditions and municipal, structural, Vendor and/or architectural requirements. Actual living areas may vary from floor area stated. Floor area has been measured and may vary in accordance with bulletin #22 published by the Tarion Warranty Corporation. Tile pattern may vary. Bulkheads are not shown on this plan and may be located in areas of the unit as required to provide venting and mechanical systems. Balconies, terraces, and patios, if any, are exclusive use common elements shown for display purposes only and location and size are subject to change without notice. Window location, size, and type may vary without notice. The length, width, material, and directional position of flooring or terrace covering are for illustration purposes only and may vary without notice. E. & O.E.

